

1926.750-751

# Subpart R Steel Erection

Steel Erection

**Workers of the past were sometimes referred to as “Dare Devils.”**



Steel Erection

# The recent past



Steel Erection

**Working at height should not be a  
“dare devil” experience.**



*An example of proper tie-off at a connection*

# Negotiated Rule

- Recognizing the dangers of the steel erection process, the Occupational Safety and Health Administration, industry and labor organizations, engineers and fabricators negotiated a new Steel Erection Rule designed to protect employees from those hazards

# Negotiated Rule

- OSHA's new rule is expected to prevent 30 fatalities and 1,142 injuries annually, and save employers nearly \$40 million a year

# Negotiated Rule

- The standard enhances protections provided to iron workers by addressing the hazards that have been identified as the major causes of injuries and fatalities in the steel erection industry.

# Negotiated Rule

- These are hazards associated with working under loads; hoisting, landing and placing decking; column stability; double connections; landing and placing steel joists; and falls to lower levels

# Overview of Subpart

- .750 Scope
- .751 Definitions
- .752 Site Layout, Erection Plan & Sequence
- .753 Hoisting & Rigging
- .754 Structural Steel Assembly
- .755 Column Anchorage
- .756 Beams & Columns
- .757 Open Web Steel Joists
- .758 Pre-engineered Metal Buildings
- .759 Falling Object Protection
- .760 Fall Protection
- .761 Training
- Appendices

## .750 Scope

- Intended to protect employees from the hazards associated with steel erection – any employees involved in the construction, alteration and/or repair of single and multi-story buildings, bridges and other structures where steel erection occurs

## .750 Scope

- The activities listed in §1926.750(b)(1) are covered by the standard.
- The activities listed in §1926.750(b)(2) are covered by the standard only if they are installed “during and are a part of” steel erection activities listed in (b)(1).

# .750 Scope



Steel Erection

# .750 Scope



Steel Erection

# .750 Scope



Steel Erection

# .750 Scope



Steel Erection

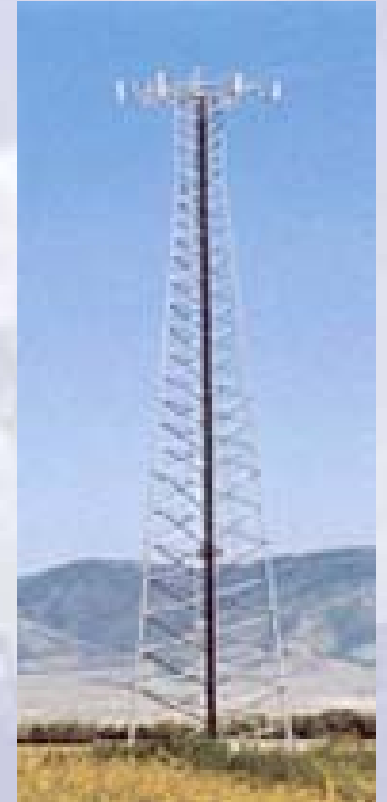
# .750 Scope



Steel Erection

# .750 Scope

- Does not cover electrical transmission towers, communication and broadcast towers or tanks



# .750 Scope

- Does not cover electrical transmission towers, communication and broadcast towers or tanks. Support structures of tanks *are* covered under Subpart R



# Application

- Steel erection activities include hoisting, connecting, welding, bolting and rigging structural steel

# Hoisting



Steel Erection

# Connecting



Steel Erection

# Welding



Steel Erection

# Bolting



Steel Erection

# Rigging



# Application

- Steel joists
- Metal buildings
- Metal decking
- Curtain & Window Walls
- Siding systems
- Ornamental iron
- Moving point to point



# .751 Definitions

Steel Erection

# Important Definitions

- ***Competent Person*** - means one who is capable of identifying existing and predictable hazards in the surroundings or working conditions which are unsanitary, hazardous or dangerous to employees **AND** who has authorization to take prompt corrective measures to eliminate them

# Important Definitions

- ***Qualified Person*** means one who by possession of a recognized degree, certificate or professional standing, or who by extensive knowledge, training and experience has successfully demonstrated the ability to solve or resolve problems relating to the subject matter, the work or the project

# More Definitions

- ***Controlling contractor*** means a prime contractor, general contractor, construction manager or any other legal entity at the site who has the overall responsibility for the project, its planning, quality and completion



# More Definitions

- ***Critical Lift*** means a lift that exceeds 75% of the rated capacity of the crane or derrick, or requires the use of more than one crane or derrick, or the crane moves while hoisting



## More Definitions

- ***Decking Hole*** means a gap or void more than 2 inches in its least dimension and less than 12 inches in its greatest dimension
- ***Opening*** means a gap or void 12 inches or more in its least dimension in a floor, roof or other walking/working surface

# More Definitions

- **Connector** means an employee who, *working with hoisting equipment*, is placing and connecting structural members and/or components
- **Controlled Decking Zone (CDZ)** means an area in which certain work (for example, initial installation and placement of metal deck) may take place without fall protection or where access to the zone is controlled